

Roan Plateau Supplemental EIS



East Fork
Falls

Planning Process

H-1601-1 — LAND USE PLANNING HANDBOOK – (Public)

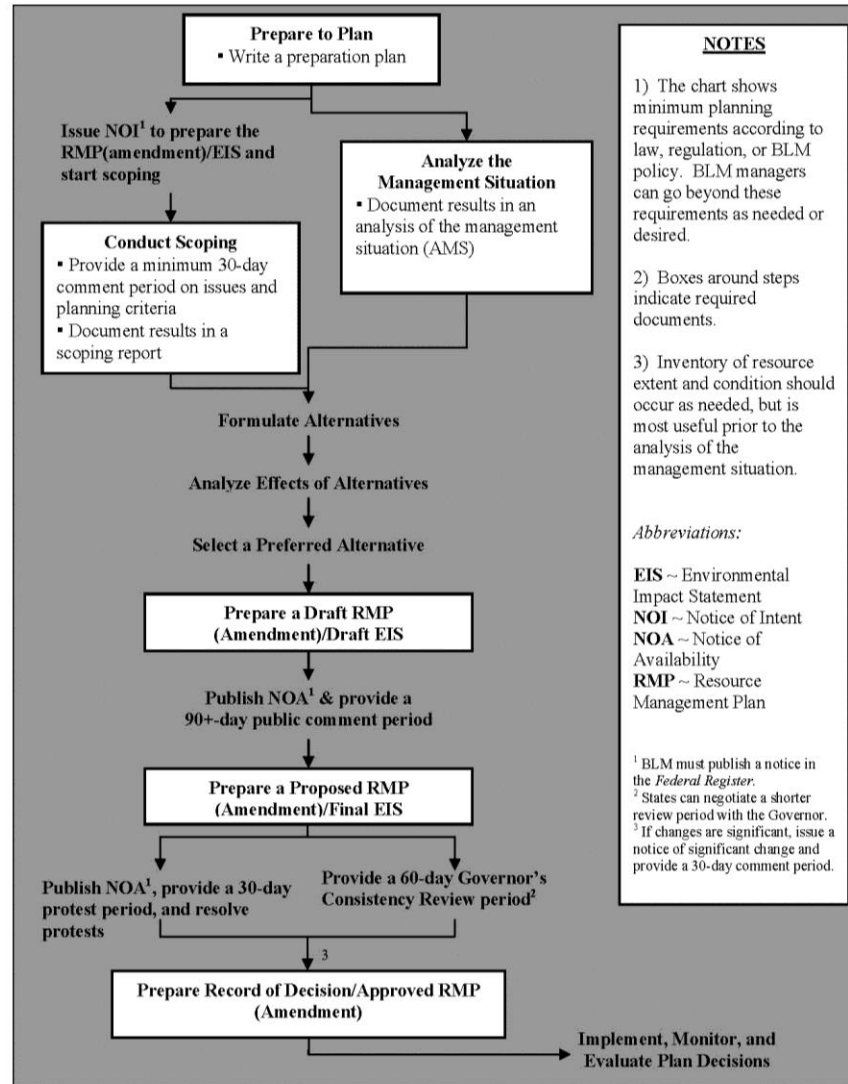


Figure 1.—EIS-level planning efforts: Required steps for new plans, revisions, and amendments

Scoping Summary

- Scoping public comment period open 64 days ending March 30
- Received 24,200 emails at close of comment period
- 20,523 were form letter emails in six categories
- 52 hard copy letters submitted



Comments

Comments ranged from;

- “A new NEPA assessment is not required per court decision”
- “BLM must respect existing leases and cannot lawfully analyze an alternative that alters valid existing rights”
- “Oil and gas leases on top of the plateau are distinct and should be considered separate from the leases at the base of the plateau”

Comments (cont)

- “Cancelling all or a portion of the leases will allow BLM to implement a phased leasing approach”
- “Conservation groups urge BLM to analyze a range of action alternatives, described in detail including a Conservation Alternative, Alternative Based on 2005 Community Alternative”, Phased Leasing Alternative, Resource Protection-Focused Alternative, No-Action Alternative”

Opportunities for NWRAC Involvement

Advise on;

- sideboards for alternative development (i.e. carry forward previous grazing, travel mgt decisions, etc that are not scoping issues)
- scope of analysis (i.e. gathering new resource data vs use of existing data)
- use and role of Cooperating Agencies
- preliminary alternative concepts